

# How to Update Your Pulse 2 Firmware?

## Step 1

Be sure that your Pulse 2 is connected via USB to your computer directly, without any USB Hub or other hardware.

## Step 2

Download the Waldorf Spectre App.

<https://downloads.waldorfmusic.com/cloud/index.php/s/R8CTpjwZ6PkAfam>

Install Spectre in your applications folder. Download the latest firmware.

<https://downloads.waldorfmusic.com/cloud/index.php/s/n6mxaCwWFZ2yeB2>

Unzip the firmware.

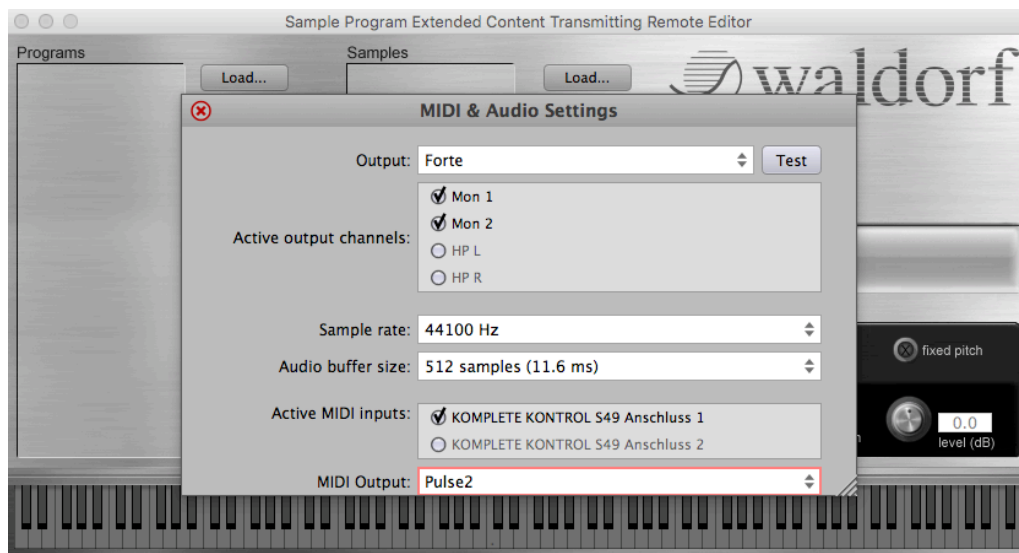
## Step 3

Launch Spectre.

Click “Audio/MIDI” to configure Spectre for your current system.

The important settings is “Midi Output”.

Here you have to choose your Pulse 2.



Close the MIDI & Audio Settings window.

## Step 4

Click “Upgrade”, choose the firmware you have downloaded and click „Open“.

Wait till the update transmission is ready and the Pulse 2 rebooted.

That's it, have fun with your Pulse 2!

Your Waldorf Team.