

How to install a Blofeld Sound- Sampleset

Step 1

Be sure that your Blofeld is connected via USB to your computer directly, without any USB Hub or other hardware.

Step 2

Download the Waldorf Spectre App.

<https://cloud.waldorfmusic.com/index.php/s/GYJAYc3icLPK8wx>

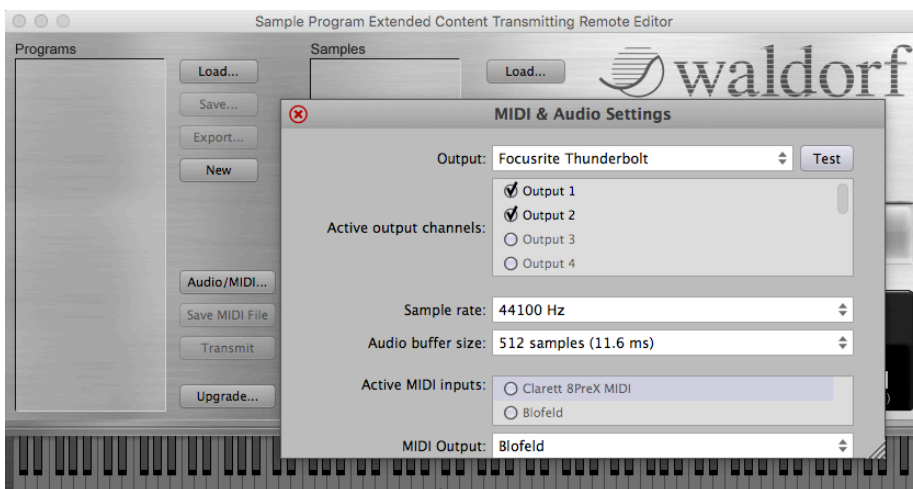
Install Spectre in your applications folder. Download the latest firmware.

<https://cloud.waldorfmusic.com/index.php/s/KWEYaxzno3fSsiy>

Unzip the firmware.

Step 3

Launch Spectre. Click “Audio/MIDI” to configure Spectre for your current system. The important settings is “Midi Output”. Here you have to choose your Blofeld.



Close the MIDI & Audio Settings window.

Step 4 Transferring a Soundset

Hit the Upgrade button and choose the *.mid file of the sound set you like to transfer to Blofeld. For transferring to Blofelds Bank A, choose the *.mid file with the ending A.mid. For transferring to Bank B, choose the ending B.mid. etc.

The display shows: „receiving SysEx“ during transmission.

Wait until the SysEx transmission is finished.
Your new sound set is now ready to use.

If the transmission is faulty, please check the following settings in the global menu.

MIDI Channel > omni / Device ID > 0 (00h)

Step 5 Transferring Sample Content

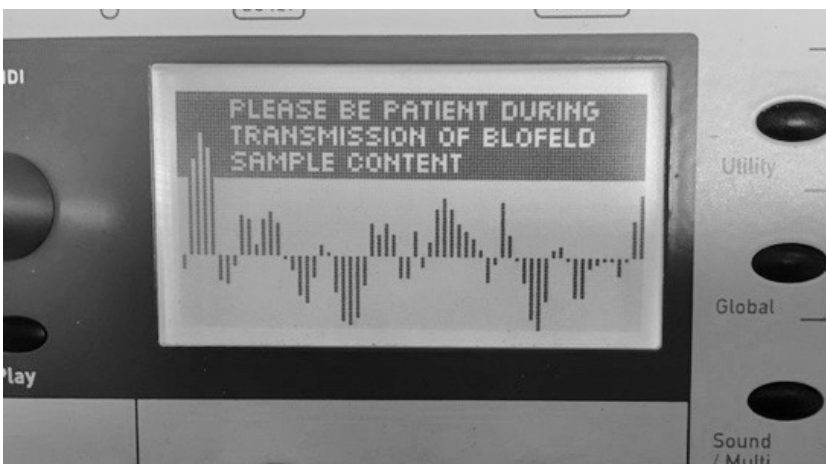
In case you bought a sample based sound set, you need to proceed the following additional steps. Please note: You need an installed License SL for your Blofeld desktop to load samples. If you use a Blofeld Keyboard the License SL expansion is already installed.

Close Spectre and restart the application . Don't forget to choose your Blofeld as Midi Out in the AUDIO/MIDI settings, as you did before in STEP 3.

Drag & drop your WPC File (Waldorf Sample Content of the sound set) into the left column (Spectre - Programs).



The samples should appear in the programs column. Hit transmit. The samples will be transferred. Please wait until the upload is finished. It can take up to 25 minutes depending on the sample set size.



After the transmission follow the steps shown on the Blofeld display.



If for some reason the transmission of the WPC file doesn't work you can send the sample content also as a MIDI File. To generate a *.MID File, use the „Save MIDI File“ function. After that press „Upgrade“ and select the just generated *.MID File.

The transmission will start immediately.

If you have any further question please contact:

support@waldorfmusic.de

Your Waldorf Team